

SYSTEM

zetaplus



Clinical

C-Silicone Impression Material

Zhermack 
Dental

zetaplus system

Solutions for all clinical situations.

ZHERMACK reaffirms the success of the **ZETAPLUS SYSTEM**.

The **ZETAPLUS SYSTEM**, has been appreciated worldwide for 25 years, has maintained its high performance and constant reliability in order to obtain the best possible clinical results.

zetaplus

zetaplus soft

oranwash L

thixoflex M

oranwash VL

SYSTEM **zetaplus**

REDUCED MARGIN OF ERROR

› **Clear colour contrast** to **reduce the risk of error**, consequently saving time and material.

BALANCED REACTIVITY

› **Ideal balance** between working time and setting time.
(**Snap-set** effect).

› Optimal dosage of the catalyst increases the available working time and reduces contraction.

“FLOW CONDITIONING” EFFECT

› Increased **flowability and extreme dimensional stability** are achieved thanks to SAS (Synthetic Amorphous Silicas) high-activity spheroid fillers.

zetaplus system

“Flow conditioning” effect for high-detail impressions.

ZETAPLUS with ORANWASH L and THIXOFLEX M

ZETAPLUS, soft to mix with rigid set

The ***“flow conditioning” effect*** helps the material ***flow*** and ***reduces pressure*** on the soft tissue. Due to its rigid set, **ZETAPLUS** is the recommended ***putty*** for the two-stage technique.

ORANWASH L, hydrophilic and fluid

This light bodied hydrophilic flowable silicone is suitable for the two-stage technique.

THIXOFLEX M, thixotropic, flowing and hydrophilic

This ***medium bodied thixotropic silicone guarantees accurate detail*** in humid environments thanks to its ***intense hydrophilic character. Recommended for the single-stage technique.***



Soft to mix due to the “flow conditioning” effect



Flowability in the sulcus

SYSTEM zetaplus

ZETAPLUS SOFT with ORANWASH VL

ZETAPLUS SOFT, flowability and elasticity

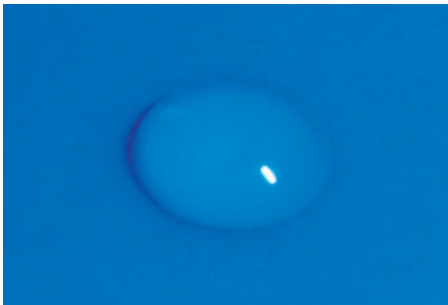
This **soft to mix**, with **elastic setting putty** is suitable for any clinical situation and is particularly recommended for the **single-stage** technique.



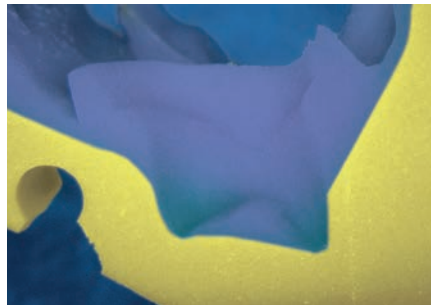
Optimal rigidity

ORANWASH VL, hydrophilic and very fluid

This **very light bodied hydrophilic silicone** is suitable for all impression techniques.



Hydrophilic after 1 minute



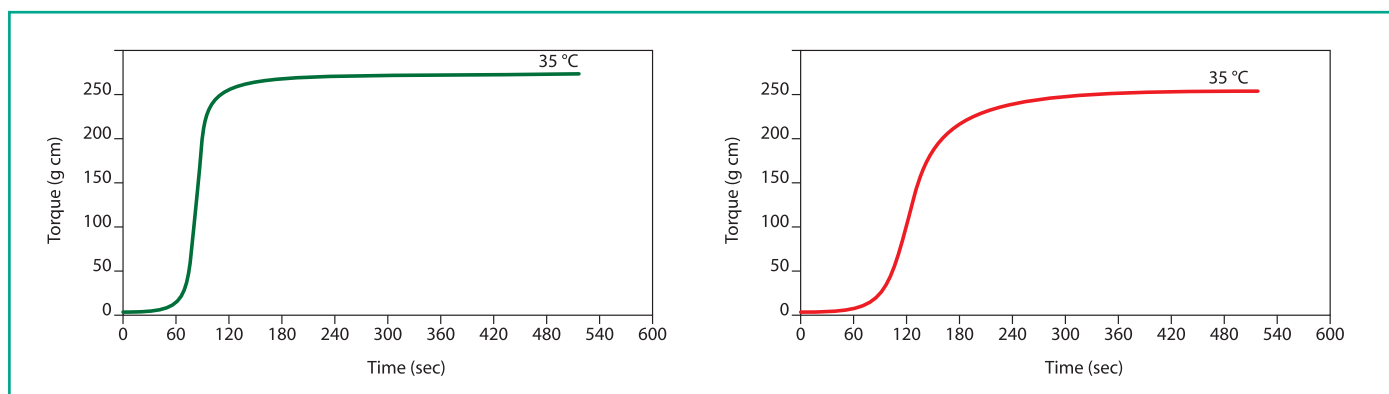
Flowability while working

Indurent gel and zetaplus system

The ideal colour contrast.

The **INDURENT GEL** catalyst guarantees a **homogeneous mix** for use with the putties and the washes of the **ZETAPLUS SYSTEM**.

Ideal balance between working time and setting time



SNAP-SET effect (*zetaplus - zetaplus soft*)

SNAP-SET effect (*oranwash VL – oranwash L*)

| TECHNICAL INFORMATION | ZETAPLUS | ZETAPLUS SOFT | ORANWASH VL | ORANWASH L | THIXOFLEX M |
|--------------------------------------|----------------|------------------|----------------|----------------|----------------|
| Mixing time | 30 sec. | 30 sec. | 30 sec. | 30 sec. | 30 sec. |
| Total working time | 1 min. 15 sec. | 1 min. 15 sec. | 1 min. 30 sec. | 1 min. 30 sec. | 2 min. |
| Time in Mouth | 3 min. 15 sec. | 3 min. 15 sec. | 3 min. 30 sec. | 3 min. 30 sec. | 3 min. 30 sec. |
| Setting time | 4 min. 30 sec. | 4 min. 30 sec. | 5 min. | 5 min. | 5 min. 30 sec. |
| Deformation under pressure (min/max) | 2% - 5% | 2% - 5% | 2% - 8% | 2% - 8% | 2% - 8% |
| Elastic recovery | > 98% | > 98% | > 99% | > 99% | > 99% |
| Dimensional stability | < -0.2% | < -0.2% | < -0.7% | < -0.7% | < -0.7% |

Performance of ZETAPLUS SYSTEM

zetaplus system
Reliable in any situation.

Zhermack 
Dental

SYSTEM**zetaplus****Packaging**

| | |
|------------------------------------|---|
| C100600 ZETAPLUS | 1 tub 900 ml (1.53 Kg) + scoop |
| C100312 ZETAPLUS | 1 tub 1800 ml (3 Kg) + scoop |
| C100468 ZETAPLUS | 1 container, 10 Kg + scoop |
| C100730 ZETAPLUS INTRO KIT L | 1 tub Zetaplus 900 ml (1.53 Kg) + scoop + 1 tube Oranwash L 140 ml + 1 tube Indurent gel 60 ml + mixing pad |
| C100720 ZETAPLUS TRIAL KIT L | 1 tub Zetaplus 200 ml + scoop + 1 tube Oranwash L 40 ml + 1 tube Indurent gel 60 ml + mixing pad |
| C100610 ZETAPLUS SOFT | 1 tub 900 ml (1.53 Kg) + scoop |
| C100740 ZETAPLUS SOFT INTRO KIT VL | 1 tub Zetaplus Soft 900 ml (1.53 Kg) + scoop + 1 tube Oranwash VL 140 ml + 1 tube Indurent gel 60 ml + mixing pad |
| C100650 ORANWASH VL | 1 tube 140 ml |
| C100660 ORANWASH L | 1 tube 140 ml |
| C100670 THIXOFLEX M | 1 tube 140 ml |

Catalyst

| | |
|----------------------|--------------|
| C100700 INDURENT GEL | 1 tube 60 ml |
|----------------------|--------------|

Equipment

| | |
|---------------------|---|
| C303230 ALGHAMIX II | Mixing machine for alginate and silicone (230 V)* |
| C303215 ALGHAMIX II | Mixing machine for alginate and silicone (115 V)* |

Accessories

| | |
|-----------|---|
| D510010 | Putty Cut |
| C207201 | Mixing pad, 20 sheets |
| XR0250670 | Mixing disk for silicones for Alghamix II |
| C303030 | Mixing pad for Alghamix II, 20 sheets |

*Disk for silicone available as an accessory

BRANCHES**GERMANY**

Zhermack GmbH Deutschland
 Öhlmühle 10 - D-49448 Marl

T +49 (0) 54 43 / 20 33 - 0
 F +49 (0) 54 43 / 20 33 - 11
 info@zhermack.de
 www.zhermack.de

POLAND

Zhermapol Sp. z o.o.
 ul. Augustówka 14
 02 - 981 Warszawa - Polska

T +48 22 858 82 72
 +48 22 292 71 17
 F +48 22 642 07 14
 biuro@zhermack.com
 www.zhermapol.pl

USA

Zhermack Inc.
 P.O. Box 4195, River Edge
 New Jersey 07661 - 4195

T +1 (877) 819 6206
 +1 (732) 389 8540
 F +1 (732) 389 8543
 info@zhermackusa.com
 www.zhermackusa.com

Zhermack S.p.A. | Via Bovazecchino, 100 | 45021 Badia Polesine (RO) ITALY
 T +39 0425 597611 | F +39 0425 53596 | info@zhermack.com | www.zhermack.com

Zhermack