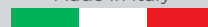




# AcryPlus **evo**

ACRYLIC TEETH

Made in Italy



**Ruthinium®**  
**Group**

*We take care of your smile*

With AcryPlusEvo we reinforce the work of professionals with a smile

## AcryPlusEvo

Quality materials, aesthetics, natural occlusion morphology and practical, intuitive use are the grounds for our work to help you get the best results with:

- COMPLETE PROSTHESES
- OVER DENTURES
- TORONTO BRIDGES
- ALL ON FOUR
- BAR PROSTHESES



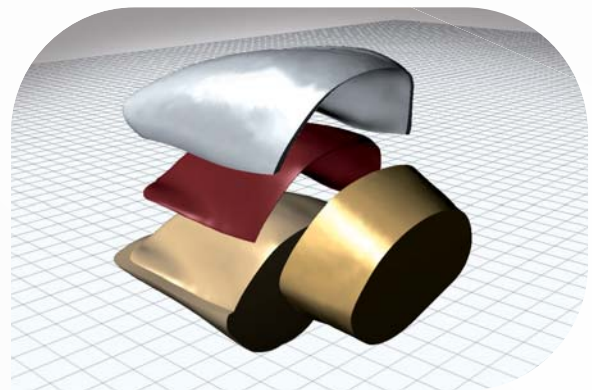
# Aesthetics

Cutting the neck, dentin and multilayer stratified enamel to give a natural pearly finish.

Texturing and characterisation using cutting edge CAD-CAM technology give a natural finish to the teeth.

Wide neck forms enable easier aesthetic adaptation of the prosthesis to the structure beneath.

Large forms of incisors and molars to give natural beauty to the prosthesis.



# Technology

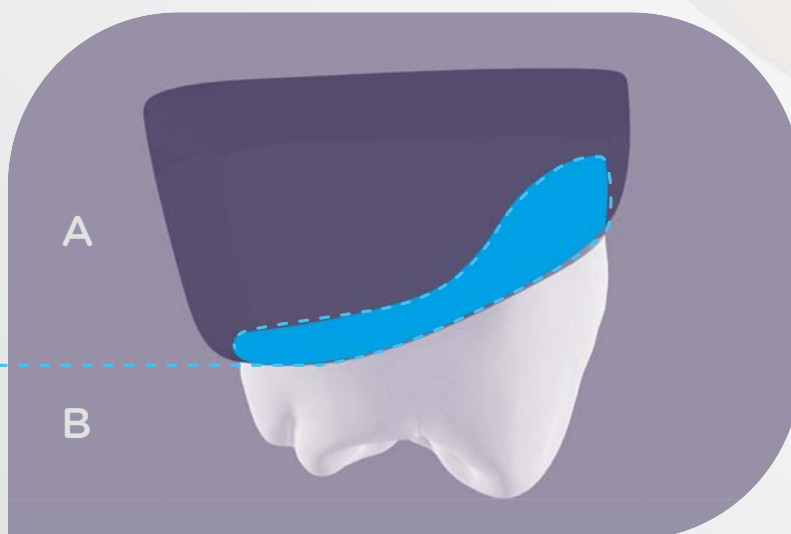
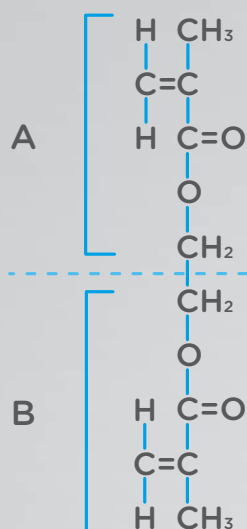
Resin elasticity: teeth in PMMA resin are extremely elastic and have better resistance to the mastication force.

High abrasion resistance: the use of high molecular weight resins guarantees long-lasting resistance for the prosthesis.

The use of PMMA as the base guarantees a perfect bond between the tooth and resin, eliminating the problem of the single teeth detaching from the prosthesis.



PMMA Molecule

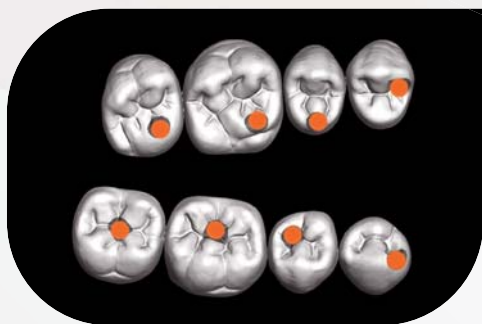




# Use

The anatomy of the posteriors is developed to create the Wilson and Spee curves easily and rapidly.

The special form of the ED2-ED4-ED6 posterior neck zone simplifies and speeds up the mounting process, with no need to grind the heel of the tooth.

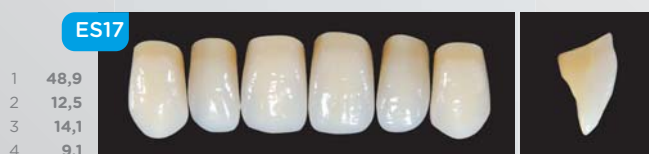
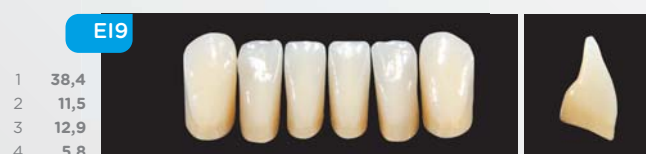
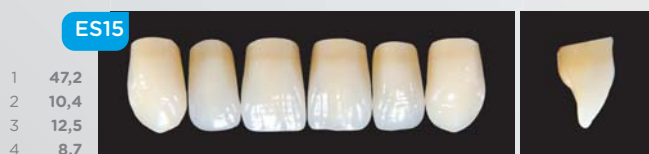
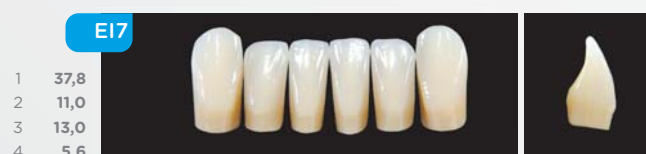
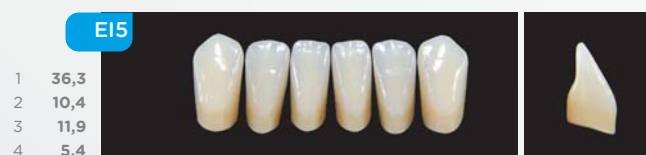
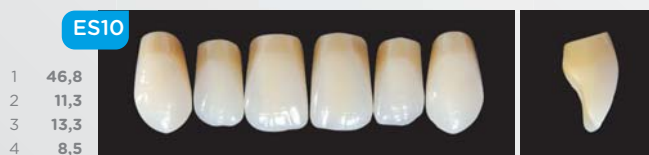


# Advantages

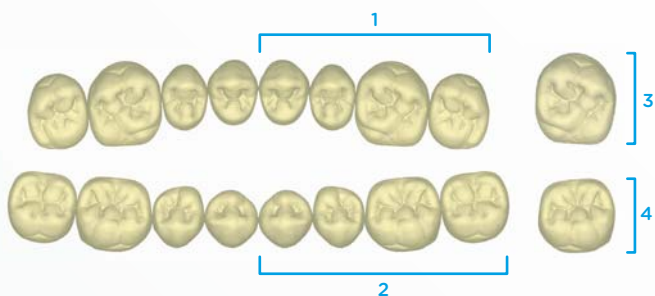
Tooth to tooth occlusion reduces the contact points, reducing the trauma to the structures beneath the prosthesis.

Reduced contact between antagonist teeth reduces the risk of muscular stress, preventing disorders to the stomatognathic system.

# Mould Chart



PRODUCT CODE	
0120036	ACRY PLUS EVO 6 UPPER
0120037	ACRY PLUS EVO 6 LOWER
0120038	ACRY PLUS EVO 8 UPPER
0120039	ACRY PLUS EVO 8 LOWER
0120042	ACRY PLUS EVO SET 28 DENTI



### AVAILABLE SHADES

A1 A2 A3 A3,5 A4 B2

C1 C3 D2 D3

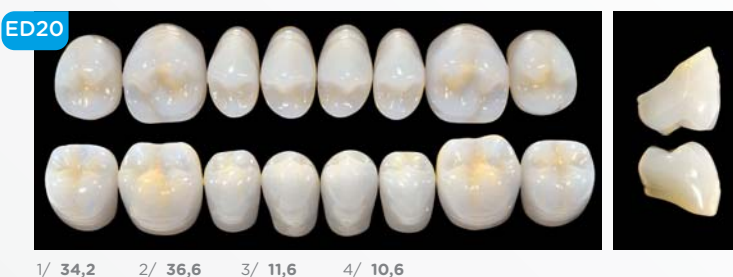
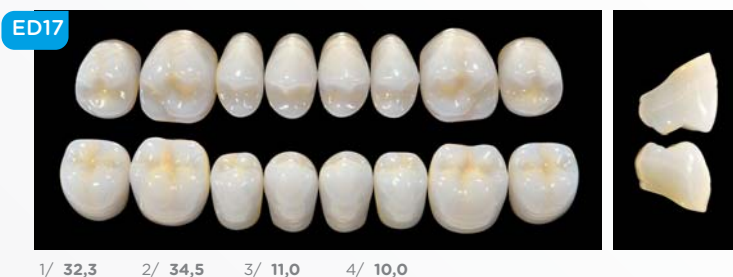
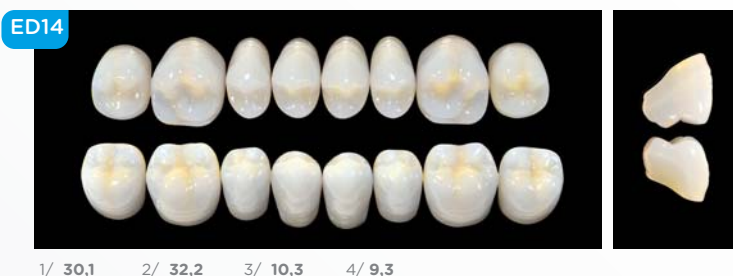
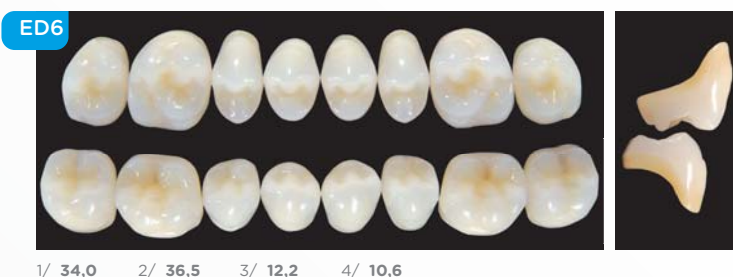
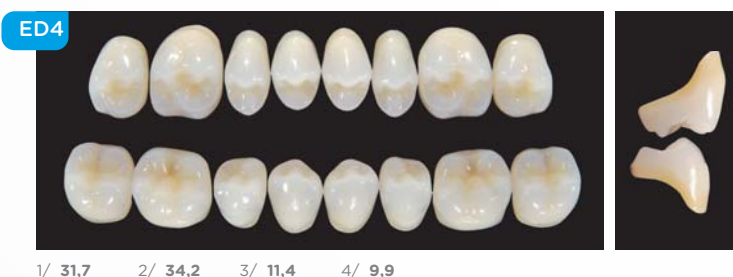
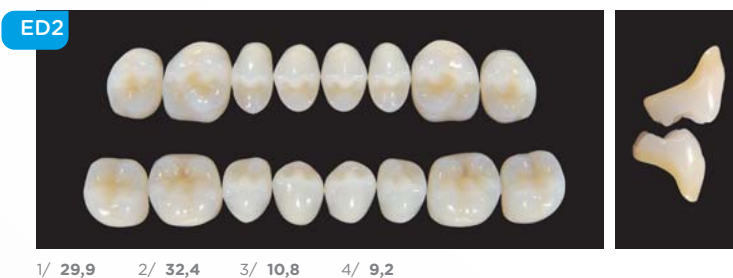
1A 2A 3A 4A 2B 1D

A1 - A2 - B2 - 1A - 2A	WHITE
A3 - A3,5 - 1D - 2B	YELLOW
A4 - 3A	LIGHT BROWN
4A - C1 - D2 - D3	GREY
C3	DARK BROWN

### ARTICULATION TABLE \*

UPPER INCISORS	LOWER INCISORS	POSTERIORS
ES3	EI2	ED2-ED14
ES5	EI4	ED2-ED4-ED14-ED17
ES8	EI4-EI5	ED4-ED17
ES10	EI7	ED4-ED6-ED17-ED20
ES12	EI5-EI7	ED4-ED17
ES15	EI7-EI9	ED4-ED6-ED17-ED20
ES17	EI9	ED6-ED20
ES18	EI7-EI9	ED6-ED20

\* The combination are indicative. The type of fitting and the clinical case may require different combinations.



Anatomical teeth similar to human teeth and characterized by an intercuspitation tooth to tooth having a single point of contact. Cusp angle 45°.





**Ruthinium®  
Group**

*We take care of your smile*

**Dental Manufacturing S.p.A.**  
Via Ca' Mignola Nuova, 1699  
45021 Badia Polesine (RO) - Italy

T (0039) 0425 51628 - (0039) 0425 590587  
F (0039) 0425 590156  
info@ruthinium.it - www.ruthinium.it

AF02.15.1